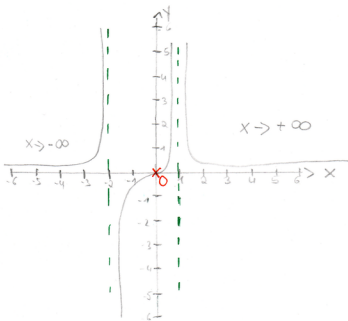


S: 12/10

d) Skizze

$\mathbb{D}_f = \mathbb{R} \setminus \{1, -2\} \Rightarrow$ senkrechte Asymptote

Nullstelle = 0



$$f(x) = \frac{3x}{(x-1)^2(x+2)}$$

$$\lim_{x \rightarrow 1} \underbrace{\frac{3x}{x+2}}_1 \cdot \underbrace{\frac{1}{(x-1)^2}}_{+\infty} = \infty$$